



# ACCESSIBLE BATHROOM

## GENERAL RECOMMENDATIONS

- \* Non-slip flooring
- \* Outward opening door
- \* Roll-in shower (no threshold)
- \* Wall reinforcement to provide grab bars near toilet and in bath and shower
- \* Pressure-balanced and temperature regulated faucets
- \* Easy-to-use faucets (eg. lever type)
- \* Ensure mirror is usable when standing or sitting
- \* Adjustable-height shower head
- \* Ensure height under roll in sink allows for knee clearance



Roll In Shower with No Threshold



Lever Handles



Regular Sink

Roll Under Sink



Height Adjustable Shower Head



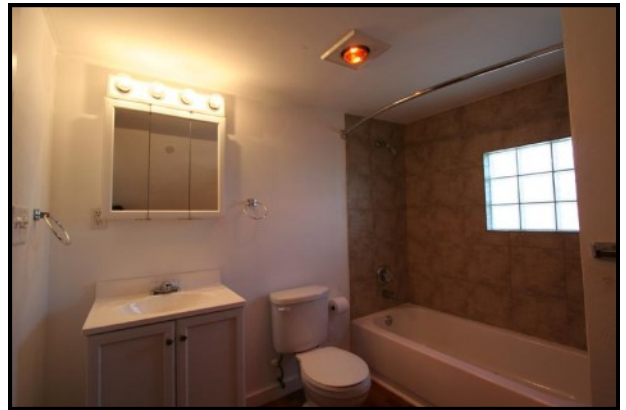
Bathroom Grab Bars

## OTHER FEATURES TO CONSIDER

- \* Handheld faucet at sink
- \* Electrical outlet that is accessible (i.e. front or side of counter)
- \* Double hinge for door (to allow increased entrance clearing)
- \* Installing heat lamps (helps regulate body temperature)
- \* In-floor heating
- \* Pump on shampoo bottles and mouthwash
- \* Toothpaste roller
- \* Electric toothbrush



Hand Held Faucet



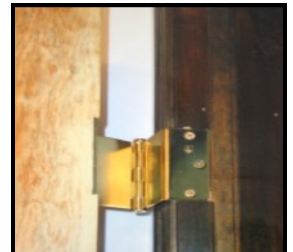
Heat Lamp Installed in Ceiling



Pump for Easier Use



Toothpaste Roller



Double Hinge to Increase Door Clearance

**Independent Living Centre Kingston  
540 Montreal St., Kingston, ON K7K 3J2**

**Ph: 613-542-8353 \* 613-542-4783**

**Email: [info@ilckingston.com](mailto:info@ilckingston.com) \* Web: [www.ilckingston.com](http://www.ilckingston.com)**